

自然景観

観光施設

Natural Scenery

Sightseeing Facilities

1 Nissho Pass (Hidaka)



Strategic road across the Hidaka mountains. From Nissho Pass Enchi Observation Platform, visitors can enjoy a panoramic view of the vast Tokachi Plain with the Akan and Higashi-taetsu Mountains. A primeval forest, from which the headstream of the Saru river starts, extends around this area and the mountain scenery is enjoyable.

Inquiries: Hidaka Tourist Information (Hidaka Area)/Tel. (01457) 6-2008
日高峠 (日高町)

MAPCODE 608 166 877 *71

2 Memu Suzuran (Lily of the Valley) Field (Biratori)



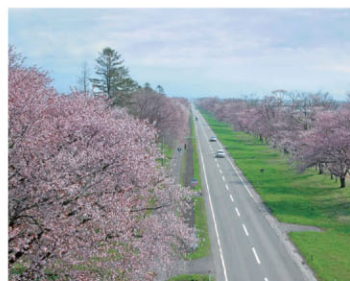
Suzuran, a flower that blooms in early summer, is the official flower of Biratori. When it is their season, tens of thousands of tiny lilies bloom in the field of approximately 15 hectares, and the sweet aroma spreads around.

Best time: mid. May to mid. June
Inquiries: Biratori Tourist Information/ Tel. (01457) 2-2223

MAPCODE 811 348 472 *77

芽生(めむ)すずらん群生地(平取町)

4 Shizunai Nijukken Road lined with cherry trees (Shin-hidaka)



As many as 3,000 cherry trees are in overwhelming bloom in the spring for 7 km along the both sides of the 36-meter-wide Nijukken road (The name 'Nijukken', or 20-ken, is the pronunciation of the old Japanese term which means the width of the road). The Shizunai Cherry Blossom Festival is held at the beginning of May, when vendors sell souvenirs and others.

Best time: early to mid. May
Inquiries: Shin-hidaka Tourist Information/ Tel. (0146) 42-1000

MAPCODE 551 139 393 *17

二十間道路桜並木(新ひだか町)

6 Mt. Apoi (Samani)



This area is a treasure house of more than 80 varieties of alpine plants. There are many rare plants that are only seen here, too. The geology is so unique that it was designated as Japan Geopark.

Inquiries: Samani/ Tel. (0146) 36-2119

MAPCODE 712 404 061 *42
(Mt. Apoi Visitor Center)

アポイ岳(樺皮町)



The Hidaka area is exceptionally beautiful with the sea on the one side and the mountains on the other.

3 Niikappu Hot Spring Resort, famous for flowers (Niikappu)



This is a new flower spot in Niikappu hot spring resort that is visited by many tourists. Different flowers bloom in the spot yearly: the scene filled with sunflower pleased the visitors in the summer of 2010.

Inquiries: Niikappu/ Tel. (0146) 47-2183

MAPCODE 551 069 326 *43

新冠温泉 花の名所(新冠町)

5 Night view of cherry blossoms along Yushun-no-sato (Urakawa)



A lane of 3 km long lined with cherry trees extending from the entrance of Yushun no Sato Park to JRA Hidaka Training Farm. At the peak of the blossoms, the street turns pink with about 3,000 cherry trees.

Best time: early to mid. May
Inquiries: Urakawa/ Tel. (0146) 26-9014

MAPCODE 564 388 840 *61

優駿さくらロードの夜桜(浦河町)

7 Cape Erimo (Erimo)



The majestic scenery of the Hidaka mountains changing into reef and sinking into the Pacific Ocean is breathtaking. Visitors can see common seals living there and lying flat on the reefs throughout the year.

Inquiries: Erimo/ Tel. (01466) 2-4626

MAPCODE 765 015 609 *46

樺皮岬(えりも町)

HIDAKA AREA

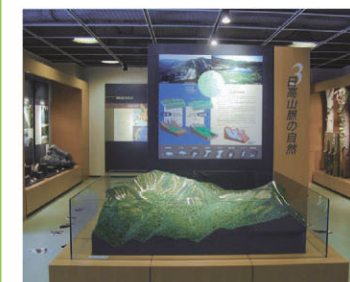
- 1 Hidaka Mountains Museum
- 2 Nibutani Ainu Culture Museum
- 3 Thoroughbred Road Niikappu
- 4 Shakushain Museum
- 5 Suimeibashi Park
- 6 Mt. Kannon Observatory
- 7 Cape Erimo "Kaze no Yakata"



Various facilities provide local information and natural observation activities.



1 Hidaka Mountains Museum (Hidaka)



This museum introduces nature, climbing features, geology and rocks in the Hidaka mountains. In the four-floor building, each floor has its own theme, and only looking at exhibits is inspiring enough. There is an observatory as well, which commands a panoramic view of the Hidaka mountains.

Inquiries: Tel. (01457) 6-9033

MAPCODE 694 128 855 *46

日高山脈館(日高町)

2 Nibutani Ainu Culture Museum (Biratori)



More than 10,000 valuable Ainu cultural items such as cloths, toys and hunting tools are stored here. In addition to a corner where videos of Ainu traditional dances and others are available to watch, Chises (traditional houses) are restored outside.

Inquiries: Tel. (01457) 2-2892

MAPCODE 442 799 097

二風谷アイヌ文化博物館(平取町)

3 Thoroughbred Road Niikappu (Niikappu)



This is a Michi-no-eki (roadside station) where tourists can casually drop by. The facility is complemented by a tourist information center, rest space, a restaurant and a shop at which thoroughbred horse-related goods are sold. A local product shop is annexed to the station, too.

Inquiries: Tel. (0146) 45-7070

MAPCODE 551 068 789 *61

サラブレッドロード新冠(新冠町)

4 Shakushain Museum (Shin-hidaka)



Shakushain is the name of a Hidaka Ainu leader who lived in the mid 1600's. This museum exhibits many cultural assets of the indigenous people of Hokkaido, such as the reproduction of a Kotan (village). Next door is the Ainu Folk Museum.

Inquiries: Tel. (0146) 42-6792

MAPCODE 888 870 323 *88

シャクシャイン記念館(新ひだか町)

5 Suimeibashi Park (Urakawa)



This park is located near Notsuka tunnel, which runs along the Tenma Way (Route 236) leading to Tokachi area of eastern Hokkaido. Highly pure ground water, which is extra soft, springs from the Hidaka mountains and is piped to the park. Water is available to anyone free of charge.

Inquiries: Urakawa/ Tel. (0146) 26-9014

MAPCODE 1 001 199 772 *86

翠明橋公園(浦河町)

6 Mt. Kannon Observatory (Samani)



This place is located about 100 meters above the sea level. From here visitors can see scenic spots in Samani, including Cape Enrumu and Cape Erimo on the east, Samani fishery harbor down below, and the Rosoku Rock on the west. A charge-free telescope is available.

Inquiries: Samani/ Tel. (0146) 36-2119

MAPCODE 712 455 456 *78

観音山展望台(樺皮町)

7 Cape Erimo "Kaze no Yakata" (Erimo)



This is a sightseeing spot on the tip of Cape Erimo, where a 10 m/s strong wind blows more than 290 days a year. Attractions include the Kaze-no-Theater (Theater of Wind) which introduces the nature and life in Erimo, and a corner where 25 m/s wind is experienced.

Inquiries: Tel. (01466) 3-1133

MAPCODE 765 014 715 *63

樺皮岬「風の館」(えりも町)